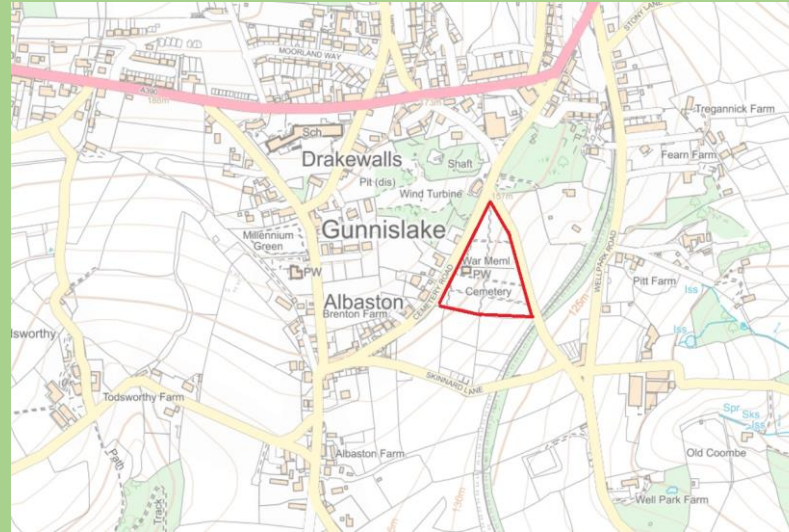


# Albaston Cemetery

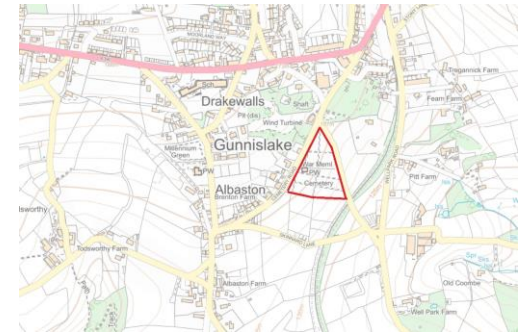
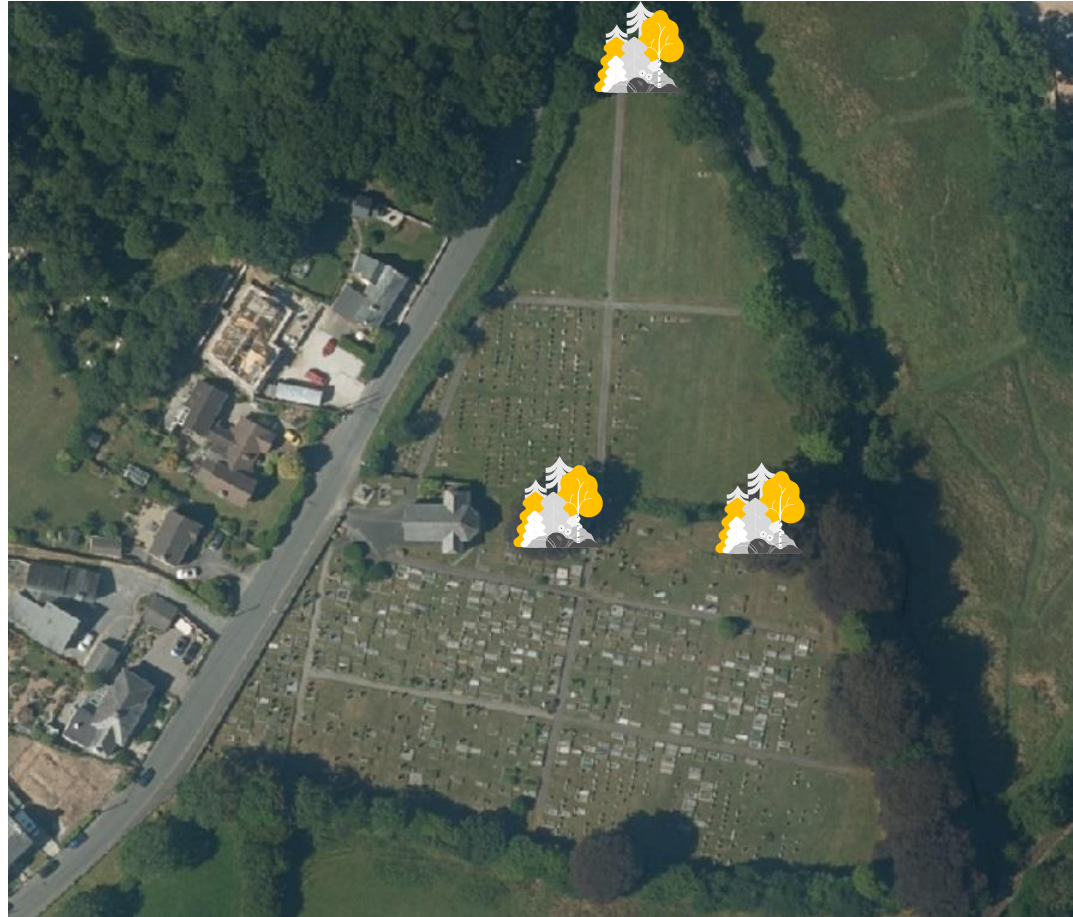




# Albaston Cemetery

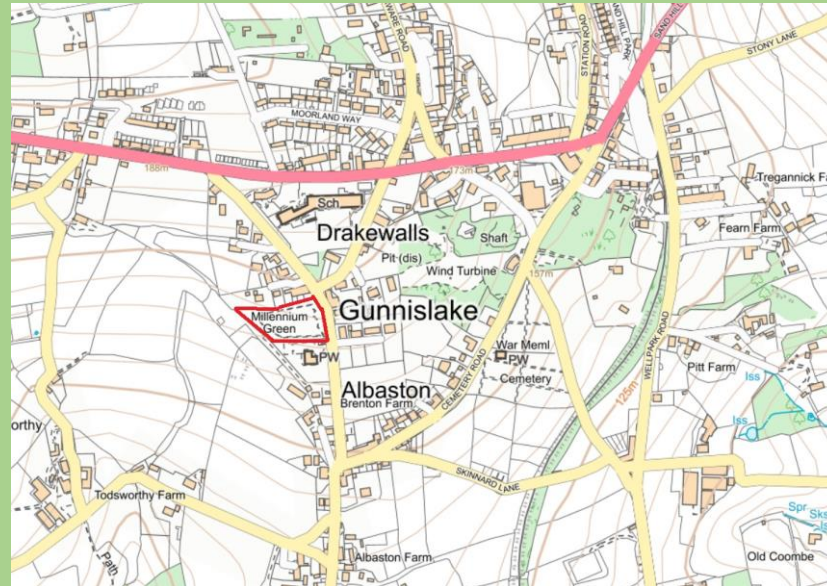
Round off square corners where hedges meet

Hedgerow infill between the old and new part of the cemetery





# Albaston Millennium Green



Maps: © Geosphere 2020 – Parish Online Software

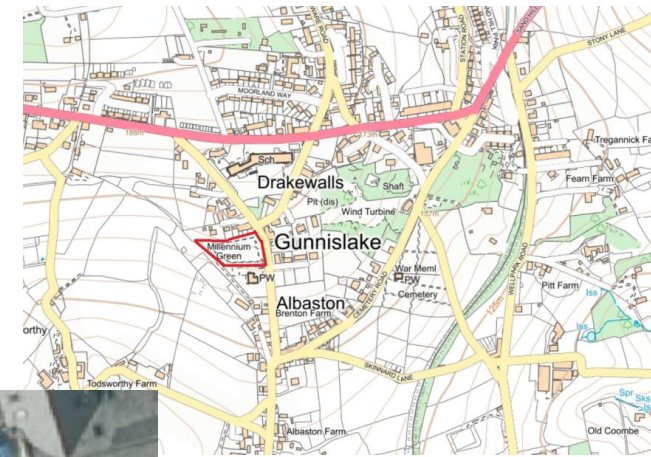
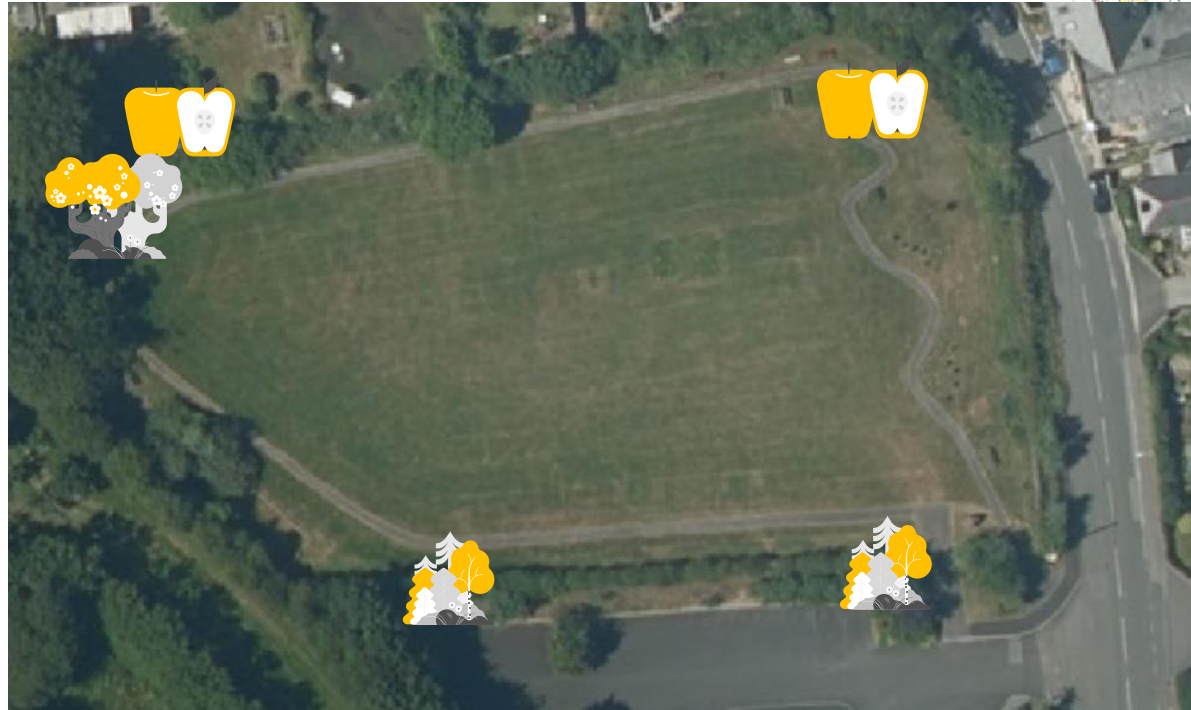


# Albaston Millennium Green

A small orchard or copse could be planted in the far end – also some cherry blossom as there are beehives in the field adjacent to this area

Another small orchard or copse could be sited in the top right-hand corner

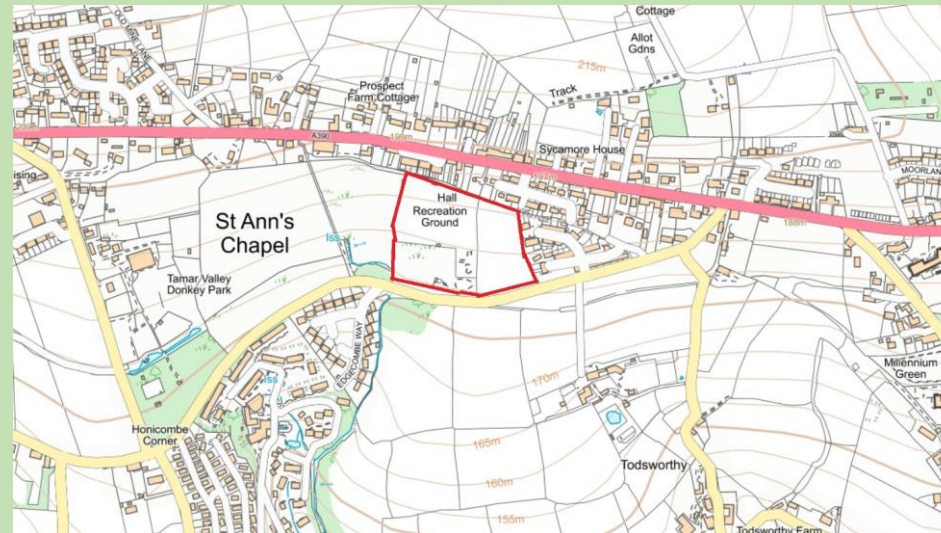
Thicken up the hedge along the car park boundary







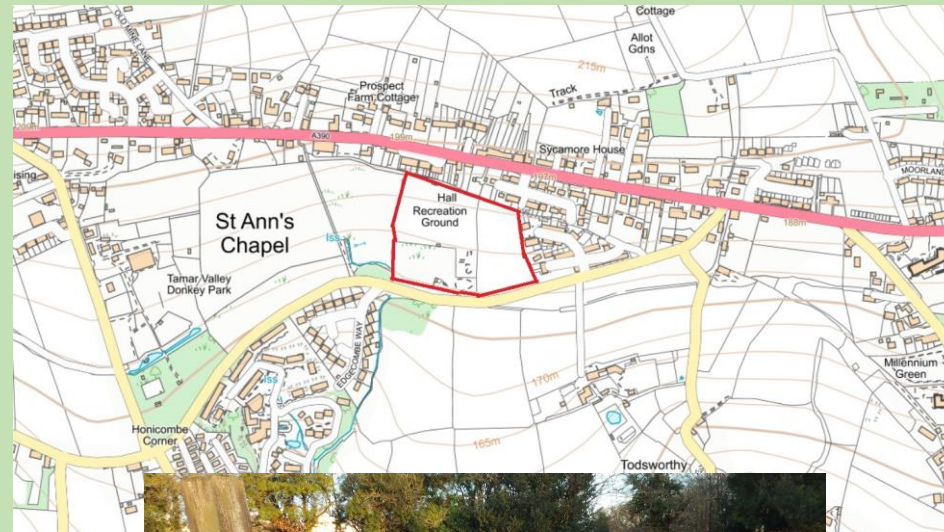
# St Ann's Chapel Playing Field N, NW, NE



Maps: © Geosphere 2020 – Parish Online Software



# St Ann's Chapel Playing Field S, SW, SE



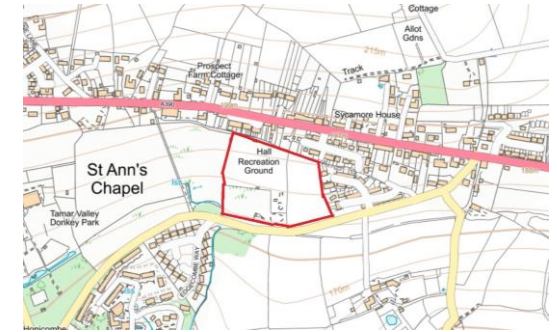
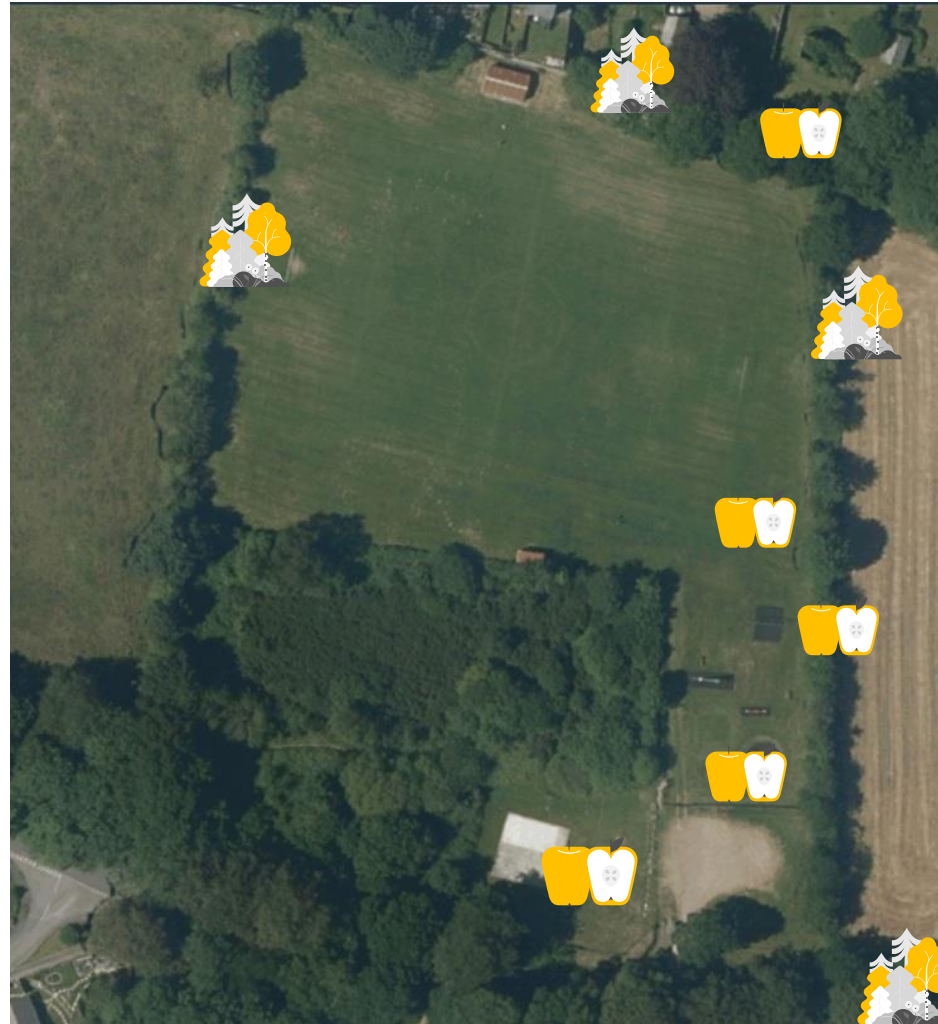


# St Ann's Chapel Recreation Ground

The pavilion has a stark concrete retaining wall behind it which could be screened by some fauna

The hedging is sparse on both sides of the park and could be filled

Potential for a natural screen near the skate park



Small trees or fruit trees and hedges around the 3 sides of the playpark which are fenced off.

The bottom left-hand corner has the potential for a copse or small orchard (car park end)

Potential for a small orchard in the top right hand corner